



QUICK-START GUIDE



Guide #1

USB Potentiostat Installation

- 1 Insert installation media and click 'Install Software'.



- 2 The 'Gamry Software Installation' program will run.

NOTE - If you have Gamry software previously installed, you will be asked to remove previous versions of the software and the Gamry device drivers. Click 'YES' - All previous data will be saved.

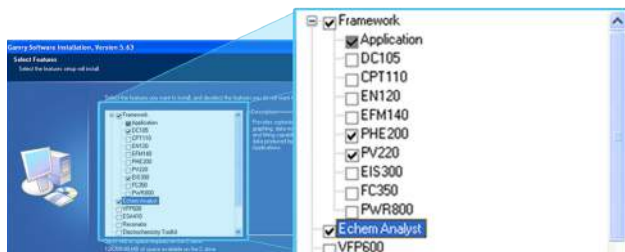
- When asked to select folder location, click 'Next'.
- Locate authorization codes on packing slip.

ITEM	DESCRIPTION	QTY	UNIT	AMOUNT
1	80273 Rotating Electrode (RAGLE/RAGLZE)	993	00013	1
	Serial Number: Gamry 80273A Rotator Manual			999.00
	Rotator Manual, Tech 80273A			999.00
	Series 8 / Rotator Control Cable, 8P			999.00
2	Cell Kit for Slow and Fast Scan Electrode Experiments			999.00
	Manual Kit			999.00
3	Start for Slow/Quick Change Tap/Cylinder Electrode			999.00
4	Platinum Rotating Disk Electrode Tip			999.00
5	Research Electrochemistry Software License			999.00
6	SOFTWARE AUTHORIZATION CODES - DO NOT DISCARD			
	PHE200=2428805372			
	PV220=3736926739			
	PHE200=2428805372			
	PV220=3736926739			
Total Packages in Shipment: 2 Boxes				
Box #1: Dimensions: Weight: 17.9 x 14 x 22 20.5LB				
Box #2: Dimensions: Weight: 2 20.9 x 17 x 9 3.5LB				

6 SOFTWARE AUTHORIZATION CODES - DO NOT DISCARD

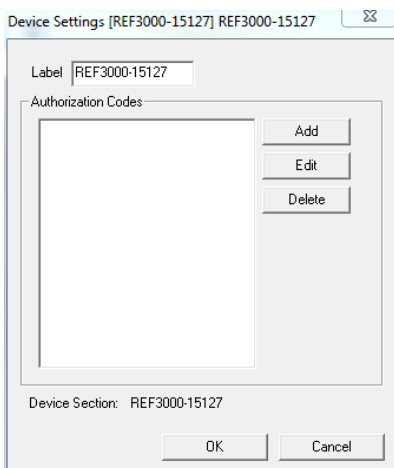
PHE200=2428805372
PV220=3736926739

- Select software packages for which you have authorization codes, Echem Analyst and additional hardware. If you have **Global** on your packing slip, select all the packages.

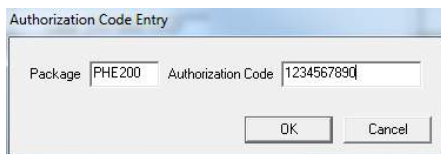


- Follow prompts to finish installation. Restart your computer.

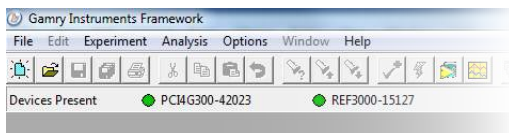
- 3 Turn on potentiostat and plug in USB. Microsoft Windows will detect your potentiostat, and a 'Found New Hardware' prompt will appear. If necessary, select 'Install Software Automatically'.
- 4 When setup is complete, double-click the Gamry Framework icon. A 'Device Settings' window will appear for the potentiostat



- 5 On the 'Device Settings' window, click 'Add' and enter the package name and 10-Digit Authorization code for each software license.



- ⑥ After a moment, your potentiostat should appear next to 'Devices Present' along with a green virtual LED. Repeat for additional potentiostats.



- ⑦ Next, follow the steps in the Quick-Start Guide #2: USB Potentiostat Calibration to calibrate your potentiostat.

WHAT DOES GAMRY SOFTWARE DO?



Gamry Framework™

Controls your Gamry potentiostat for advanced and flexible data acquisition. Select from standardized experiments that are grouped by research type or use the Sequence Wizard to build complex automated experiments.



Echem Analyst™

Quick and easy data analysis. Open your data files with Echem Analyst to perform specialized analysis algorithms and produce high quality plots. Plots can be customized, overlaid, and scaled, or data can be exported for use in other plotting programs.



My Gamry Data™

The default data folder location for Gamry Framework data files. You will find a shortcut on your desktop after installation. The data folder location can be changed within Gamry Framework by selecting: Options > Path.