



QUICK-START GUIDE



Guide #1

Interface Power Hub Installation

1

Insert installation media and click **Install Software**.

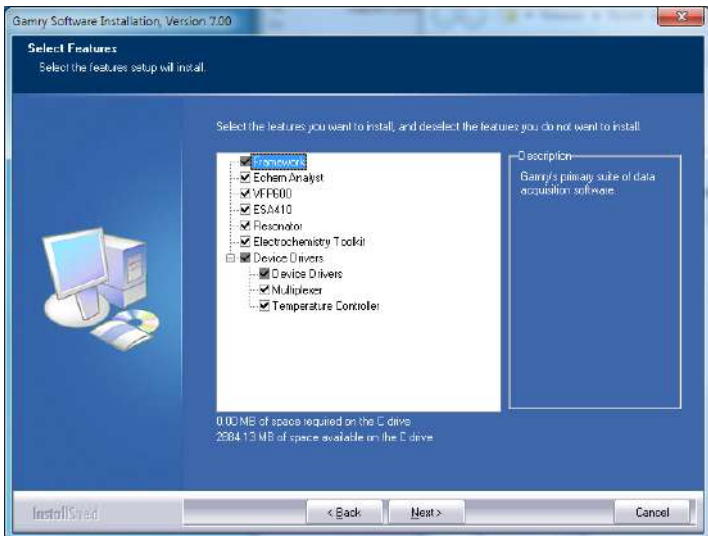


2

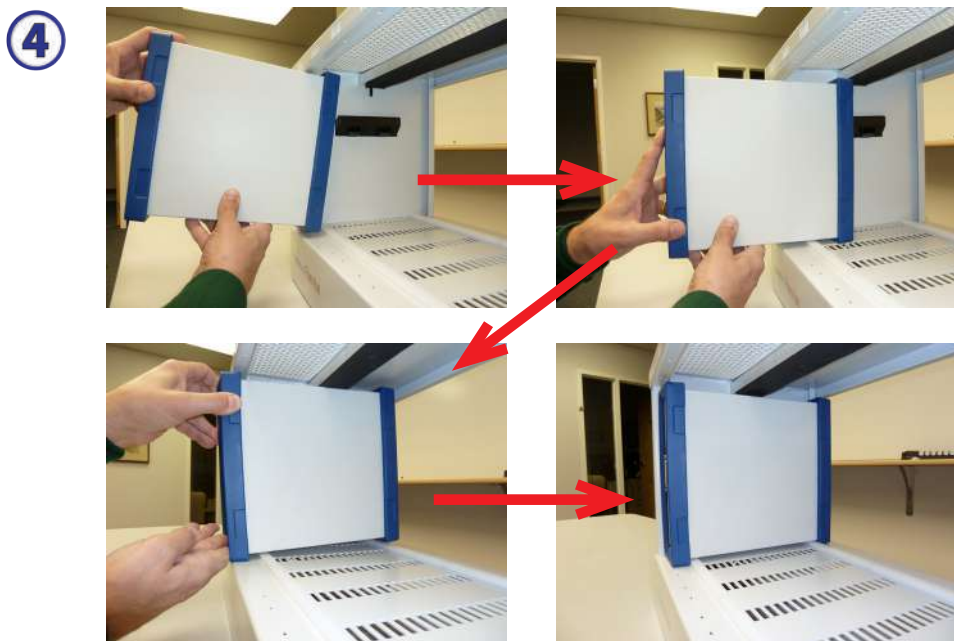
The **Gamry Software Installation** program runs.

NOTE: If you have Gamry software previously installed, you are asked to remove previous versions of the software and the Gamry device drivers. Click **YES**; all previous data are saved.

- When asked to select folder location, click **Next**.
- Select software packages for which you have authorization codes, Echem Analyst™ and additional hardware.
- Follow prompts to finish installation. Shut down computer.



- 3** Place IPH on bench and ensure Hold-down bar is fully up by rotating Hold-down Knobs clockwise. Select first instrument. Rotate vertically with Gamry logo reading downward. Insert instrument into chassis as shown below.



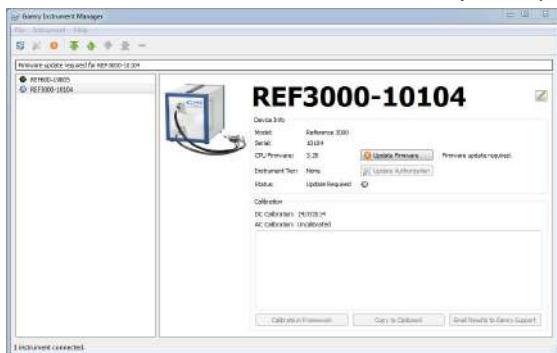
- 5** Repeat for additional potentiostats. If you have fewer than eight potentiostats, use the provided Power Hub Cover plate(s) to protect the interior of the IPH. When complete, lower the Hold-down bar by turning the Hold-down screws counterclockwise.

- 6 Connect the short power and USB cables to the potentiostats in the orientation as shown below.



- 7 Connect the power cord from the wall outlet (mains) to the IPH. Connect USB cable from the **HOST** USB connector on the back of the IPH to your host computer.
- 8 Make sure the potentiostats are OFF. Turn on host computer. Switch the Main Power of the IPH ON. Microsoft Windows® detects your IPH, and a **Found New Hardware** prompt appears. If necessary, select **Install Software Automatically**.
- 9 When setup is complete, double-click the Gamry Framework icon. The Gamry Instrument Manager appears.

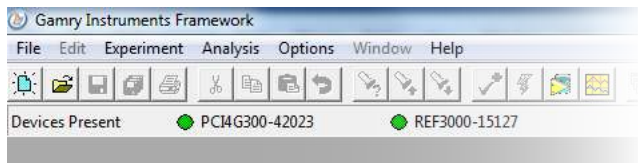
- 10 Turn on your first potentiostat. Your computer recognizes the instrument. Click **Install Software Automatically** if any such window appears. When you see the **Device Settings** window, change the potentiostat name if you wish.



- 11 To change the label of an instrument, click on the pencil icon next to the instrument's label. Close the **Instrument Manager** when you are finished.



- 12 After a moment, your potentiostat should appear next to the **Devices Present** along with a green virtual LED. Repeat for additional potentiostats.



- 13 Follow the steps in **Quick-start Guide #2: USB Potentiostat Calibration** to calibrate your potentiostats.

We have a variety of resources available to help you get started. Feel free to visit our website to find out more information on:

Application Notes - <http://www.gamry.com/application-notes/>

Technical Support - <http://www.gamry.com/service-support/>

Training Videos - <http://www.youtube.com/gamryinstrument>

WHAT DOES GAMRY SOFTWARE DO?



Gamry Framework™

Controls your Gamry potentiostat for advanced and flexible data acquisition. Select from standardized experiments that are grouped by research type or use the Sequence Wizard to build complex automated experiments.



Echem Analyst™

Quick and easy data analysis. Open your data files with Echem Analyst to perform specialized analysis algorithms and produce high quality plots. Plots can be customized, overlaid, and scaled, or data can be exported for use in other plotting programs.



My Gamry Data™

The default data folder location for Gamry Framework data files. You will find a shortcut on your desktop after installation. The data folder location can be changed within Gamry Framework by selecting: Options > Path.