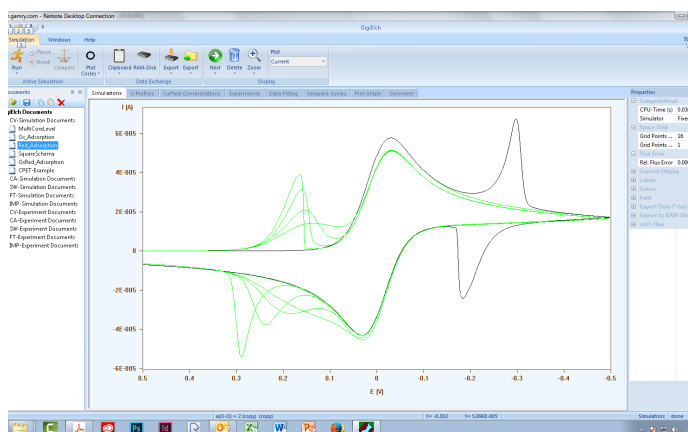




QUICK-START GUIDE



Start-up Guide
DigiElch simulation software

1

Plug in the DigiElch dongle, and let Windows® install the appropriate drivers. Leave the dongle plugged in.

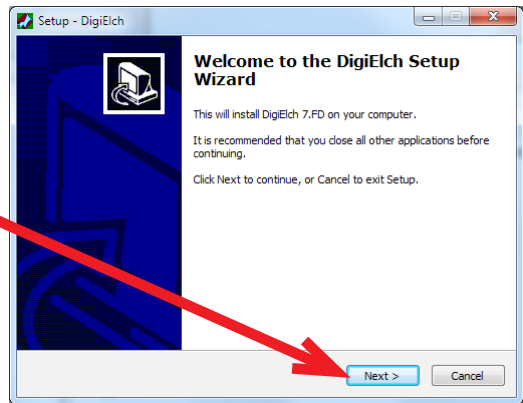
NOTE: You must have an active Internet connection for the installation to work properly.

2

Navigate to the setup file within the dongle, and double-click on it to begin installation.

3

The **Setup - DigiElch** window appears. Click the **Next >** button to continue.

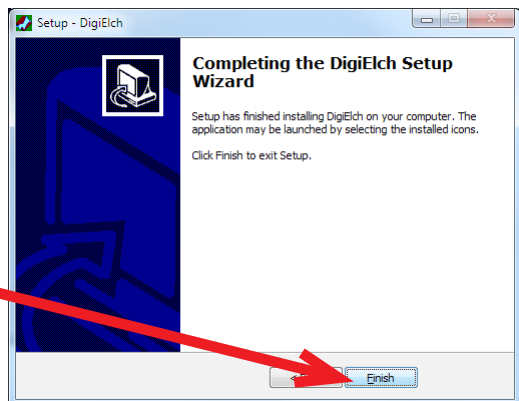


3

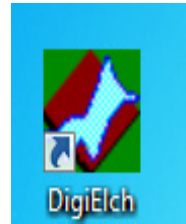
Agree to the License; click the **Next >** button. Add desktop icons if you wish, and click the **Next >** button. At the **Ready to Install** window, click the **Install** button. DigiElch installs.

4

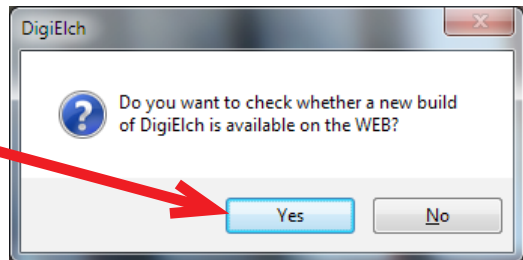
Be sure the dongle remains connected when the information window appears; click the **Next >** button. Click the **Finish** button.



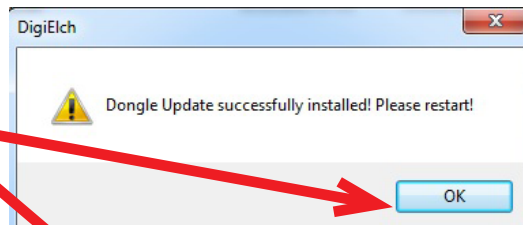
5 Double-click the **DigiElch** icon to start the software.



6 The software may ask to download a new version. If it does, click the **Yes** button to download an update.



7 The software either updates, or it needs no update. In either case, click the **OK** button.



or

